

# THREADED TEE TEST POINT

(WHABS039 - 25mm)



**BISSON**  
THE PIPE FITTINGS EXPERTS

This component is used when the system needs to be smoke tested. The threaded plug is removed, which allows the smoke generator to gain access to the system. Simply replace after use.

## Installation Instructions:

Use the correct solvent Plusbond 3019. Do not paint. Keep pipe clean and free from dust. Do not install in direct sunlight. Only install with approved pipe. Do not use solvents to clean, only soapy water.

**PART NO.:**  
WHABS039 -  
25mm

**FITTINGS  
COLOUR:**  
White

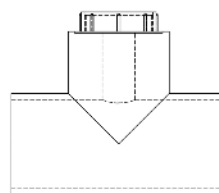
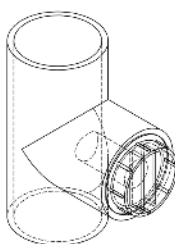
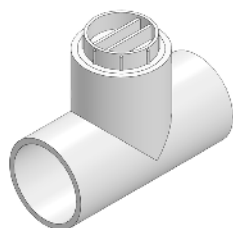
**PIPE COLOUR:**  
White

**DIAMETER  
TOLERANCE:**  
+ / - 0.15mm'

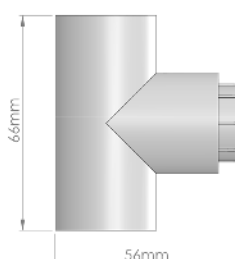
**OPERATING TEMP:**  
- 40 c to 70 c'

**WALL THICKNESS:**  
2mm

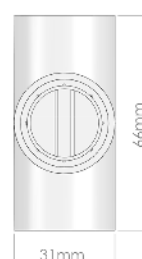
**WEIGHT:**  
29.6g



Side Elevation



Front Elevation



## RAW MATERIAL DATA

### Physical

Specific Gravity:  
Test Method ASTM D792

### Melt Mass - Flow Rate (MFR)

200C/5.0Kg 2.6g/10 min  
220C/10Kg 33g/10min  
Test Method ASTM D1238

### Moulding Shrinkage

Flow 0.0040 to 0.0070 in/in  
Test Method ASTM D955

### Mechanical

Tensile Strength  
Yield 5510psi 0.118 in (3.00mm)  
Tensile Elongation: 22%  
Break 0.118 IN (3.00mm)  
Test Method ASTM D638

### Flexural Modulus

28400psi 0.236 in (6.00mm)  
Test Method ASTM D790

### Flexural Strength

8390psi 0.236 in (6.00mm)  
Test Method ASTM D790

### Impact

Notched IZOD Impact  
73F (23C) 0.118 in (3.00mm)  
4.6ft-lb/in  
73F (23C) 0.236 in (6.00mm)  
3.3ft-lb/in  
Test Method ASTM D256

### Hardness

Rockwell Hardness (R-Scale)  
103  
Test Method ASTM D785

### Thermal

Deflection Temperature Under  
Load 264psi (1.8 MPa) Unan-  
nealed 181/83t  
Viscal Softening Temperature  
214/101t  
Test Method ASTM D1525

### Flamability

Flame Rating  
0.0630 in 1.60mm HB  
Test Method UL94

